

<http://www.freewebs.com/ymbayer/index.htm>

Kit of Semi-Automated professional Expert Advisor

Semi-Automated Expert Advisors Kit

If you trade currency or CFD on the MetaTrader4 platform this **Semi-Automatic Kit** is **extremely indispensable** for high professional quality manual as well as automated trading.

Why?

Because:

- If you trade manually, you should have some trading system composed of strategic and tactical approaches. Strategic approach completely lies on the side of personal decision; the tactical approach is a list of behaviour instructions for different possible market events. That is the most difficult part of the manual trading; you need permanently observe the market charts to capture the events which are prescribed in your tactical list with subsequent executions some types of trade operation. Tiredness, emotions, as greediness and riskiness, make the most negative impact on your account balance. You can add some loss of nice opportunities when you are out from your platform (sleeping, other business, vacations etc.) or, contrarily, when you are under hypnosis of market actions that has as consequence crucial errors in trade.
- If you trade fully automatically, you need to have some kind of insurance from dramatic changes of equity or some tactical adjustments of trading parameters of orders already in market. So this pack permits to control effectively trading risk as well as to reduce considerably emotional charges from trade.
- Finally, you can build your own automated system: just add an expert that make signal generating and orders setting operations; the tactical module is fully provided by this kit of semi-automatic robots. This conception is as the construction set Lego, you build your expert by modules: each expert is a module, open as many charts of defined symbol as experts you project to use in your system, attach each expert on different chart, setup parameters and it's done, it can trade effectively.

This kit of semi-automatic trading robots is a smart contemporary solution for maximizing tactical performance of any kind of trading. Each robot has own mission based on your instructions, and it accurately executes them without any emotional

background. Moreover you can construct you own tactical net using a combination of robots.

The kit contains 12 expert advisors, divided in 6 classes:

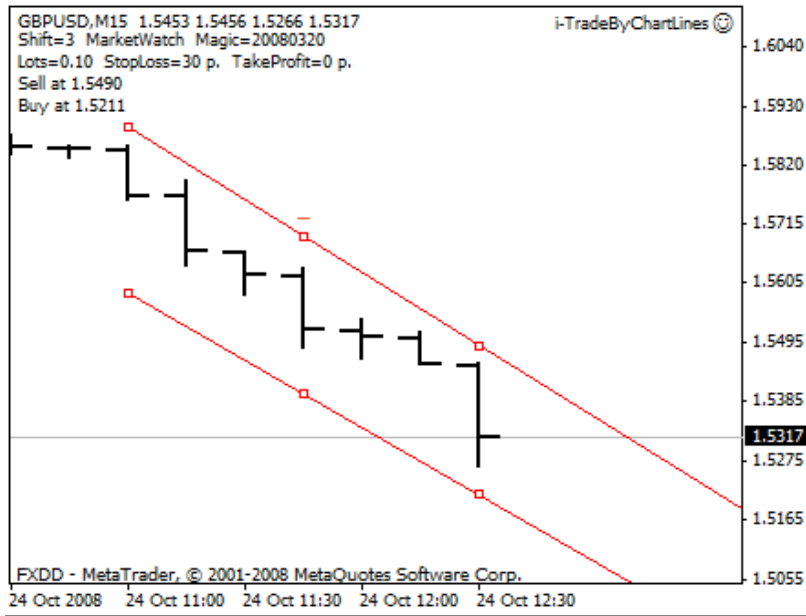
- EAs realizing tactics based on technical analysis (channels, triangles, rectangles etc.)
- EAs realising tactics based on fundamental analysis (news trading)
- EAs hunting on specific trading opportunities (trailing pending orders) and controlling pending orders (OCO, one-cancel-other).
- EAs controlling opened positions (advanced trailing stop loss)
- EAs controlling changes of account balance (some kind of generalized Stop Loss and Take Profit for whole account balance).
- EAs augmenting performance of manual control of orders and EA – trade assistants (graphical order control by mouse, market price performance alerts)

[Home Page](#)

Specification: Semi-automated trading systems

i-TradeByChartLines

This EA automatically trades from lines drew by user on chart. It needs two lines on the chart on which it is attached, one above and second below the current market price. The EA supports two types of straight lines: horizontal and trended. You can set up two lines of different type. If these lines form, for example, a trading channel, you can organize a bounce trade in interior of the channel (sell from up line, buy from low line) as well as a breakout channel trade (buy from up line, sell from low line), or both kind of trades (bounce trade with overturn stop order). So you can trade any figure of technical analysis: triangles, flags, rectangles, wedges etc.



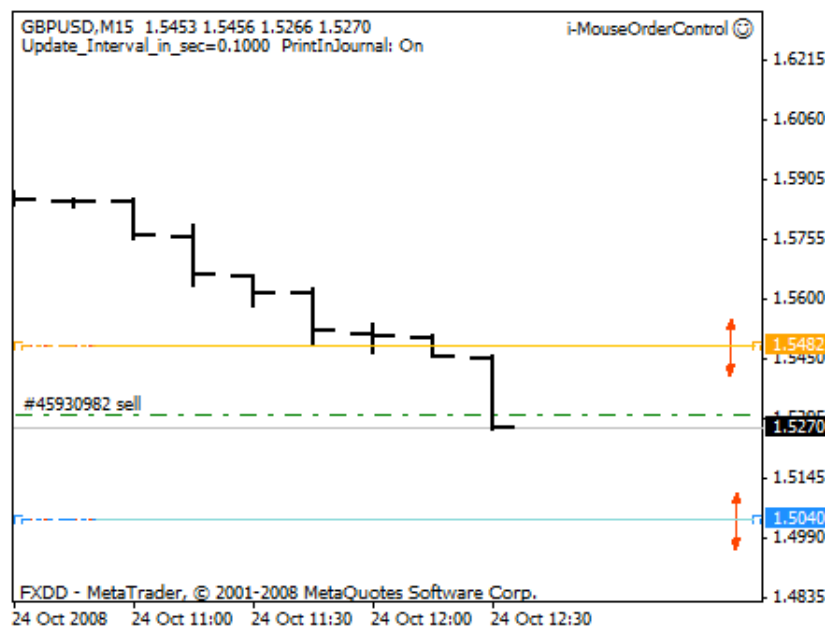
Parameters:

- NameUpLine="UPLine" – Upper line name.
- NameDnLine="DNLine" – Lower line name.
- BuyFromUp=False – If it's true, buy from upper line. If it's false, sell from upper line.
- BuyFromDn=True – If it's true, buy from lower line. If it's false, sell from lower line.
- OffsetTL=3 – Shift of trading level in pips.
- SetRevStopOrd=False – Set pending stop orders at the level of stop loss of opening position (overturn stop order)
- ShowComment=True – Show comments on chart.
- UseSound=True – Use sound.
- SoundFileName ="expert.wav" – Sound Filename
- Magic = 20080320 –EA's ID number.
- Lots=0.1 – Trading lot size
- StopLoss=30 – Stop loss level in pips.
- TakeProfit=70 – Take profit level in pips.
- NumberOfAttempts =5 –Number of trade tentative

Note: After creating two lines, you need to rename them in compliance with parameters NameUpLine and NameDnLine. For do this, right click to the line, choose "line properties" and fill the field "Name".

i-MouseOrderControl

Now you can move the levels of StopLoss and TakeProfit of opened positions by mouse. Soon after an order is opened, the expert advisor draws horizontal lines on the levels of order Stop Loss and Take Profit. These lines are strictly attached with the levels: if you move by mouse one of the lines, the expert automatically modifies the corresponding order level (TP or SL). After closing of position its corresponding lines will be deleted also. If one of the order levels (TP or SL) is not specified, its corresponding line will not appear.



Parameters:

- Update_Interval_in_sec = 0.1 – Updating interval in seconds. If 0, the EA works by ticks, else, the nonzero parameter specifies the period of updating the levels of order.
- PrintEnable = True – Enable to print messages in journal.
- SL_Color = Orange – “Stop Loss” line color.
- SL_Style = 4 – “Stop Loss” line style.
- SL_Width = 0 – “Stop Loss” line width.
- TP_Color = DodgerBlue – “TakeProfit” line color.
- TP_Style = 4 – “TakeProfit” line style.
- TP_Width = 0 – “TakeProfit” line width.

i-NewsTrader

If you trade news, this EA is indispensable in your portfolio. Now you can trade any news whenever they appear on 24 hours market. On prescribed time the EA posts two

pending stop orders with specified distance from current market price. If no order is opened at the next bar, EA modifies them in order to keep required distance from market price. By changing the chart's time frame, you adjust the frequency of orders modification. If you attach EA on 5 min chart the orders will be updated every 5 min, if you attach EA on 30 min chart it gives you 30 minutes period updating. If one of the two pending orders is opened, the second will be deleted. Opened position will be closed by TP or by SL.

Parameters:

- Lots=0.1 – Lot size.
- StopLoss=15 – SL level.
- TakeProfit=0 – TP level
- SetOrdersTime ="10:30" –Time of posting for pending orders (News time)
- DeletePendingOrdsTime ="22:30" – Time of deleting own pending orders.
- ClosePositionsTime ="22:30" – Time of closing own opened position.
- DistanceSet=20 – Distance for pending orders from market price in pips.
- UseTrailing=True – Use trailing stop loss
- ProfitTrailingOnly = True – Trailing profit position only.
- TrailingStop=25 – Trailing distance in pips.
- TrailingStep=5 – Trailing step in pips.
- Slippage=3 – Slippage in order execution.
- UseSound=True – Sound of execution.
- SoundFileName="expert.wav" – Sound file name.
- clOpenBuy=LightBlue – Color of mark on chart for opening Buy position.
- clOpenSell=LightCoral – Color of mark on chart for opening Sell position.
- clModifyBuy=Aqua – Color of mark of modification Buy position.
- clModifySell=Tomato – Color of mark of modification Sell position.
- clCloseBuy=Blue – Color of mark of closing Buy position.
- clCloseSell=Red – Color of mark of closing Sell position.

i-TrailingPendingStopOder

If you anticipate a trend swing but you don't know where it will happen exactly, you can send hunting for this event a trailing pending stop order with the help of this EA. Your tactic in this case turns into pending a stop order with some distance from current market price and move it following the market price. Our pending stop order will be modified only if the market price moves away from it. So the distance from the pending

stop order and the market price can't grow more than the amount of trailing step (see description below), only it can diminish right up to execution.

Parameters:

- All_SO_control =False – If it's true, EA controls stop orders of all symbols, if it's false, EA controls only the order of current symbol.
- TrailingDistance =20 – Trailing stop. Distance from market price just after modification.
- TrailingStep=3 – Trailing Step. Degree of liberty for market price. The pending stop order will be modified if the distance from market price will be $TrailingDistance + TrailingStep$.
- UseSound=True – Use sound after order modification.
- clModifyBuy=Aqua – Mark color (on chart) of Buy Stop Order modification.
- clModifySell=Tomato – Mark color (on chart) of Sell Stop Order modification.

i-TrailingPendingLimitOrder

If you anticipate that trend will continue after some rollback you can send hunting a Pending Limit Order in order to enter in the market with best price, on the crest of rollback. This EA does this! So your tactic in this case turns into pending a limit order with some distance from current market price and move it following the market price trend. Our pending limit order will be modified only if the market price moves away from it. So the distance from the pending limit order and the market price can't grow more than the amount of trailing step (see description below), only it can diminish right up to execution on the crest of rollback.

Parameters:

- All_LO_control =False – If it's true, EA controls limit orders of all symbols, if it's false, EA controls only the order of current symbol.
- TrailingDistance =20 – Trailing stop. Distance from market price just after modification.
- TrailingStep=3 – Trailing Step. Degree of liberty for market price. The pending limit order will be modified if the distance from market price will be $TrailingDistance + TrailingStep$.
- UseSound=True – Use sound after order modification.
- clModifyBuy=Aqua –Mark color (on chart) of Buy Limit Order modification.
- clModifySell=Tomato –Mark color (on chart) of Sell Limit Order modification.

i-TrailingStopLoss & LossLess

Firstly, the EA moves the level of SL in positive (LossLess) area if the opened order gains required quantity of pips. This system is also called "Pips protection". Secondly, it provides stepped trailing stop: if the current price goes away from Stop Loss in positive direction for more than TrailingStop + TrailingStep pips, EA moves StopLoss at distance of TrailingStop pips from current price.

Parameters:

- AllSymbols = False – If it's true, allow to control orders of all symbols. If it's false, controls only the orders of current symbol.
- UseLossless = True – Lossless system (Pips protection)
- Lossless_Level = 1 – Level of Stop Loss shift after "Ptofit_Level" gain (in pips relatively to order open price).
- Ptofit_Level = 10 – Level of gain required for shifting stop loss.
- UseTrailing = True – Trailing stop loss system
- ProfitTrailingOnly = True – Allow trailing in positive area only
- TrailingStop = 20 – Distance from current price
- TrailingStep = 10 – Step of stop loss modification (in pips).
- UseSound = True – Use sound for events.
- SoundFileName = "expert.wav" – Sound File Name.

i-OCO (one-cancel-others)

Expert Advisor "One Cancel Others": if one pending order is activated (i.e. opened) EA deletes any other pending order. The EA watches for appearance of any market position (OP_BUY or OP_SELL) at the terminal. Position may appear by manually market opening or by activation pending order. Soon after such order is appeared, EA deletes all another pending orders (OP_BUYLIMIT, OP_BUYSTOP, OP_SELLLIMIT and OP_SELLSTOP). The EA works only within the symbol on which EA is attached; it ignores the order of other symbol.

Parameters:

- _AccountNumber = 0 – Account number, If =0, any account
- UseSound = False – Use sound after execution.
- SoundFileName = "expert.wav" - Sound file name
- Slippage = 3 – Slippage.
- NumberOfTries = 5 – Number of trade tentative.
- PauseAfterError = 75 – Pause after trade tentative.

i-CloseByTotals

The advisor closes all positions when the total profit or total loss on your account of all opened positions reaches the specified levels in deposit currency.

Parameters:

- Total_LossLevel=30 - Loss level in deposit currency for closing all positions.
- Total_ProfitLevel=60 – Profit level in deposit currency for closing all positions.
- DeletePendingOrders =True - Delete pending orders after closing of all positions.
- ShowComment=True - Show comment.
- _AccountNumber =0 - Trading account number. If 0, any account
- UseSound=False - Use a sound signal.
- SoundSuccess = "ok.wav" - Sound of success of trading attempt.
- SoundError = "timeout.wav" - Sound of error of trading attempt.
- Slippage=3 – Close price slippage.
- NumberOfAttempt =5 - Quantity of attempts after error.

i-CloseByTotalsPercents

The advisor closes all positions when the total profit or total loss on your account of all opened positions reaches the specified levels expressed in percentage of current balance. Besides, this advisor can also remove all pending orders and close the terminal, if you don't want that after fixing profit or loss no any advisor can trade.

Parameters:

- PercentProfit=5.00 –Percent of profit required for close all positions.
- PercentLoss=3.00 – Percent of loss required for close all positions.
- DeletePendingOrders=False - Delete pending orders.
- CloseTerminal=False - Close Terminal.
- ShowComment=True - Show comment.
- NumberAccount=0 – Trading account number. If 0, any account.
- UseSound=False -Use sound signal.
- NameFileSound = "expert.wav" – Sound file name.
- Slippage=3 - Close price slippage.
- NumberOfTries=5 - Quantity of attempts after error.
- PauseAfterError=75 - Pause after error in seconds.

i-CloseOnTime

If you want to close all position at specific time, for example before week end or when you quit you computer, just run this expert advisor and input desirable time.

Parameters:

- CloseHour=7 – Closing hour.
- CloseMinute=0 – Closing minute.
- UseCurrSymbol=False – Close orders only on one symbol (symbol of chart). If True, close opened orders for any symbols.
- UseOneAccount=False – Use only one account.
- NumberAccount=11111 – Account number.
- Slippage=3 – Close price slippage
- clCloseBuy=Blue – Color of mark of chart for Buy positions.
- clCloseSell=Red – Color of mark of chart for Sell positions.

i-LevelSound

It is a very useful assistant in manual trading. EA watches the price moving and gives different sounds (for UP and for DOWN) after reaching specified levels. It is very handy to get information that price moved up, for example, 30 pips.

Parameters:

- MoveLevel_1 = 10 – First Level of instrument moving.
- Sound_1_up="expert" – Sound file name for reaching First Level UP
- Sound_1_dn="ok" – Sound file name for reaching First Level DOWN
- MoveLevel_2=20 – Second Level of instrument moving.
- Sound_2_up="alert2" – Sound file name for reaching Second Level UP
- Sound_2_dn="alert" – Sound file name for reaching Second Level DOWN